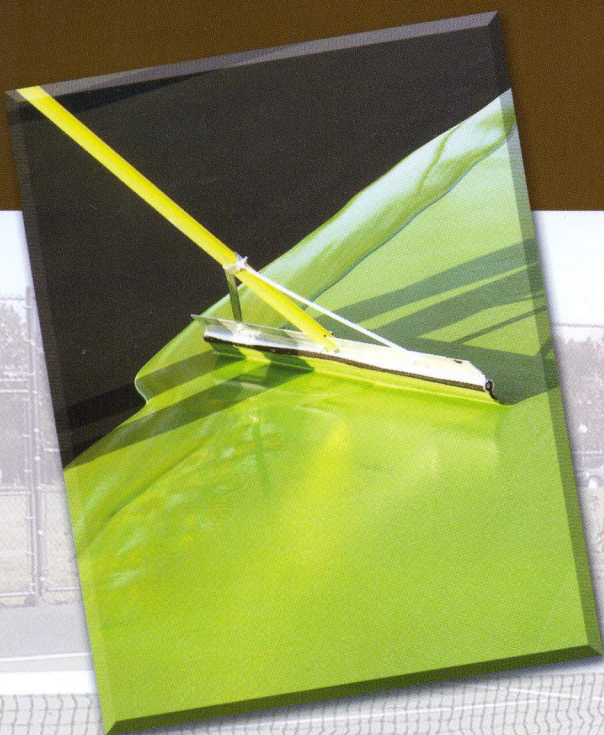


***The Best Surfaces
For The World To Play On!***





SportMaster® has been supplying owners with premium quality sport surfacing products for over a quarter century. Our dedication to bringing science and advanced technology to sport surfaces has resulted in systems of surfacing products that provide sport specific optimum performance for both player and surface.

Quality Products...

- SportMaster® products feature 100% Acrylic Resins to ensure long-term protection from all the elements and supreme resistance to the sun's damaging ultraviolet degradation. SportMaster's durability is unsurpassed.

Professional Service...

- Our unique distribution network supports a national and worldwide network of professional sport surfacing contractors to provide project owners with on site recommendations and application services.

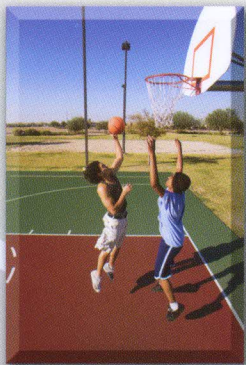
SportMaster® Tennis Systems...

Topspins, slices, and drop shots react consistently. A tight grip to your shoes provides excellent traction. These qualities provide unmatched playability for all players-recreational to professional.

For enhanced comfort, SportMaster® ProCushion Systems reduce impact shock and muscle fatigue associated with asphalt and concrete hard courts. Added layers of CushionMaster II increase shock attenuation for better health and longer playing comfort, especially for older players.

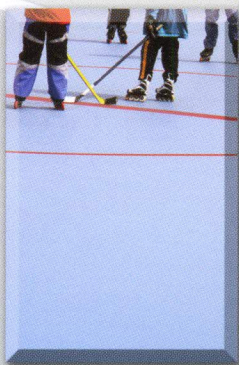


SportMaster® Tennis Court Surfacing Systems Can Be Installed To Meet Specific ITF Surface Pace Ratings of Slow, Medium-Slow, Medium, Medium-Fast, or Fast.



BASKETBALL & MULTI-USE FACILITIES

The addition of SportWax™ Clear Coat not only extends the life of SportMaster® sport surfaces, but also allows for routine, inexpensive maintenance of high wear areas such as basketball "keys" and goal creases.



SKATEMASTER™ IN-LINE SKATE SURFACE

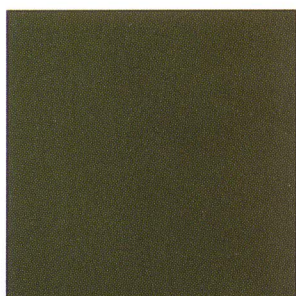
A 100% acrylic SportMaster® System designed to provide a durable, in-depth color system. From casual skating to skate parks to the high impact rigors of in-line hockey, SkateMaster™ provides the optimum surface. Ice Blue and Dove Gray are hockey colors designed for puck contrast. The full SportMaster® color pallet can be utilized for skate parks.



TRACKMASTER PLUS™

Rubber filled system that is ideal for walking trails and middle school tracks where spikes are not worn. Also an excellent maintenance system for latex and urethane running tracks where spikes are worn.

The Best Surfaces For The World To Play On!



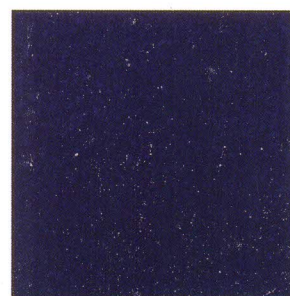
Dark Green



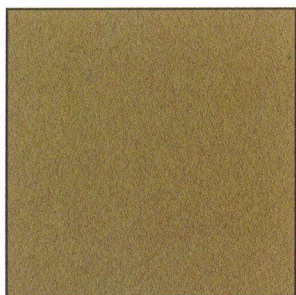
Light Green
LEED credit (SRI = 31)*



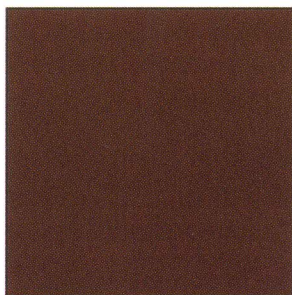
Forest Green



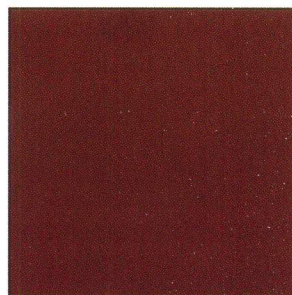
Blue



Beige



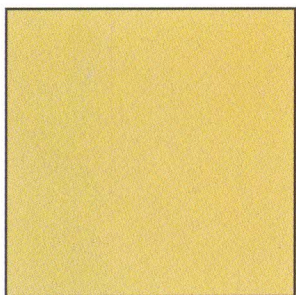
Brown



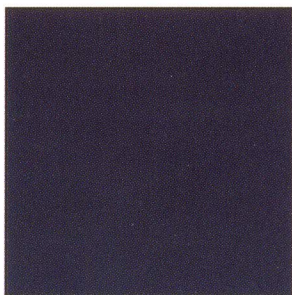
Red
LEED credit (SRI = 36)*



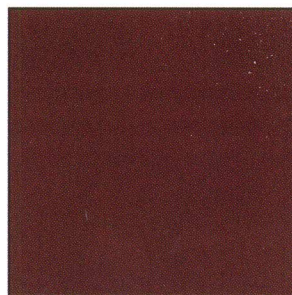
Light Blue



Sandstone
LEED credit (SRI = 46)*



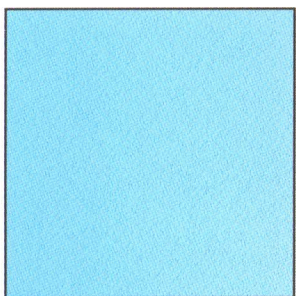
Tournament Purple
(Premium Additonal Cost)



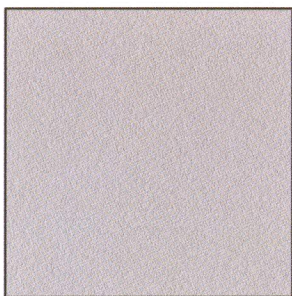
Maroon



Gray



Ice Blue
LEED credit (SRI = 62)*



Dove Gray
LEED credit (SRI = 33)*

*Solar Reflectance Index (SRI) is the percentage of solar energy that is reflected by a surface. SportMaster® colors with an SRI of 29 or higher are indicated on the color chip card. These specific colors qualify for the LEED (Leadership in Energy and Environmental Design) program under Section SS Credit 7.1: Heat Island Effect: Non-Roof. For more information visit www.usgbc.org or contact a LEED accredited professional.

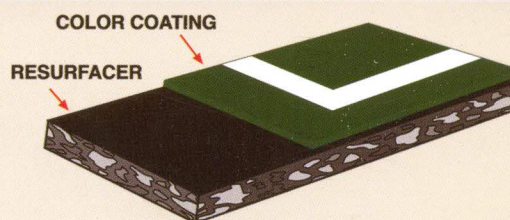
Chips on this card may vary slightly in color or finish from the actual product in the container, due to age, light, heat and printing process. Color samples based on SportMaster® products.



The SportMaster® Acrylic System

- For Asphalt And Concrete Surfaces...

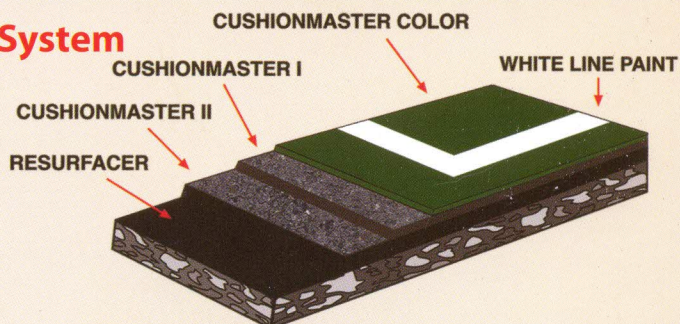
100% Acrylic Color Coatings for tennis courts and multipurpose sport surfaces.



The SportMaster® ProCushion™ System

- The Ultimate Tennis Court Surface...

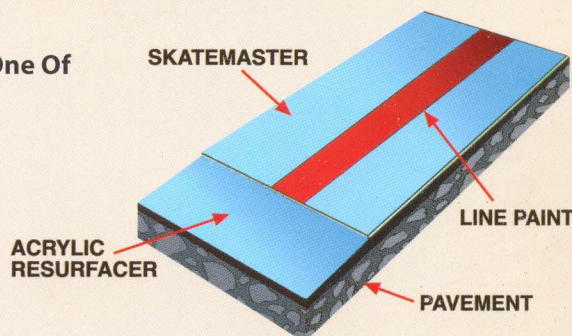
The ultimate professional and residential cushioned surface. The ProCushion™ System can be installed to ITF specified pace ratings. This 100% acrylic emulsion system is designed to provide optimum resilience and spin responsive play.



The SkateMaster™ System

- High Performance Surface Coating Designed For One Of The Hottest Sports - In-Line Skating!

SkateMaster™ is a 100% acrylic coating designed to provide a durable surface for in-line skating. From casual skating to the rigors of competitive in-line hockey, SkateMaster™ provides the optimum surface. Standard colors are Ice Blue and Dove Gray.



SportMaster® Sport Surfaces Care Instructions...

- 1. Clean your court regularly.** Once a month is suggested. Watch for evidence of mold or mildew in shaded areas and corners where organic debris tends to accumulate. Indoor courts require both frequent vacuuming and at least one annual wet vacuuming with mild detergent solution and soft bristled equipment.
- 2. Remove standing water.** Rain showers help clean your court. However, dirt accumulates in standing water, leaving stains. Remove water from birdbaths as often as possible. Irrigation systems around the court should not spray on the court.
- 3. Remove foreign matter.** Leaves and pine needles not only can stain your court, but also are breeding grounds for mold and mildew. It is especially important to remove leaves in the fall and keep your court free of debris all winter.
- 4. Use proper equipment.** Use soft nylon or hair-type brooms for scrubbing your surface. Scrubbing too hard with hard bristles can damage the surface. When using a water broom limit pressure to 70 p.s.i. Be very careful when using a power washer.

For more specific and detailed information, please reference "TENNIS COURTS - Construction and Maintenance Manual"; a joint publication of The United States Tennis Association and The American Sports Builders Association.

Form No.: CM-6



SportMaster® is a division of
ThorWorks Industries, Inc. • P.O. Box 2277 • Sandusky, OH 44870

Phone: 800-395-7325 • www.sportmaster.net • E-Mail: info@sportmaster.net